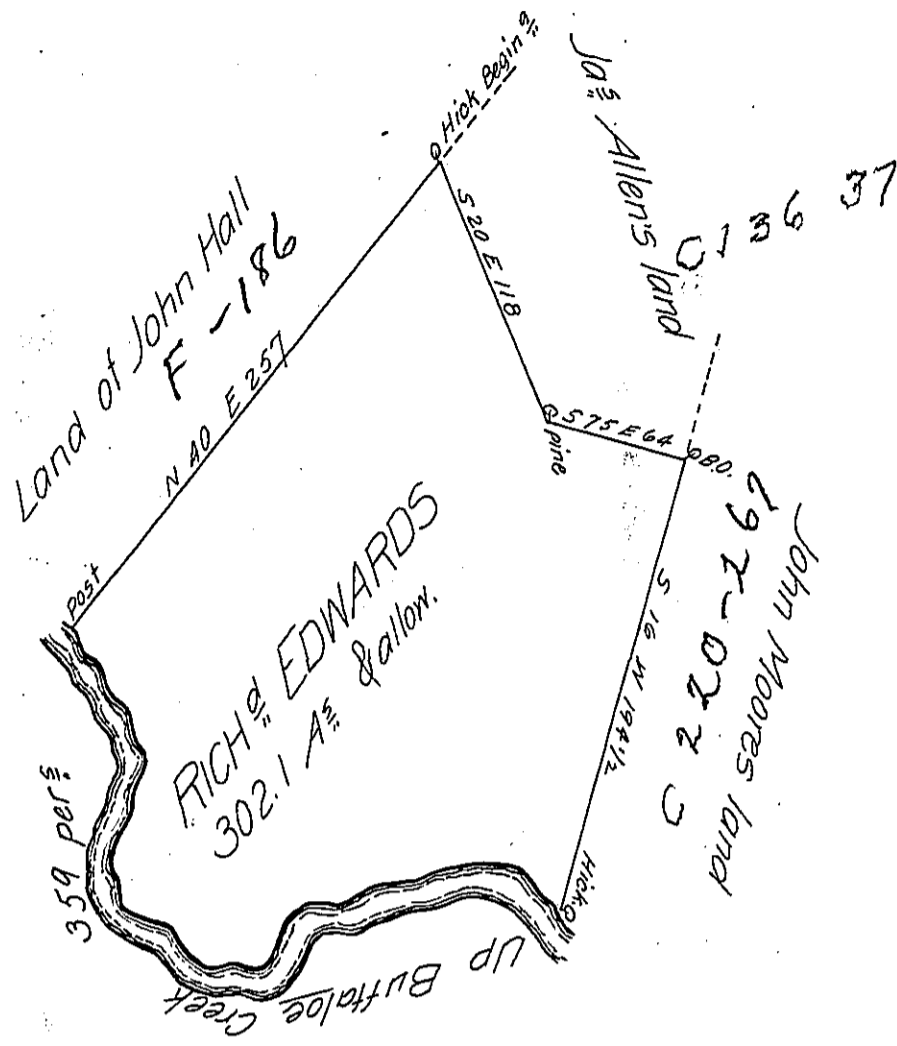


Courses & distances up Buffalo Creek

N	49	W	25
S	76	W	100
S	6	W	20
N	71	W	83
N	16	E	65
N	32	W	66
			<u>359</u>



The draught of a Tract of land called _____ Situate on the North Side of Buffalo Creek in the County of Berks Containing three hundred and two Acres & 18 perches with the usual Allowance of six Acres P.C. for Roads &c Surveyed the 12 Day of Aug^r. Anno Dom. 1769 in pursuance of an Order of Survey to Richard Edwards bearing Date at Philadelphia the 3^d day of April Anno Dom. 1769 N^o 714.

To Jn^o Lukens Esq^r S. Gen.^l }
 of pennsylva }
 signed P. W^m Maclay D.S.

IN TESTIMONY that the above is a copy of the original remaining on file in the Department of Internal Affairs of Pennsylvania, made conformably to an Act of Assembly approved the 16th day of February, 1833, I have hereunto set my Hand and caused the Seal of said Department to be affixed at Harrisburg, this sixth day of March 1906

Isaac R. Brown
 Secretary of Internal Affairs.